

WaveManager

Centralized Management Software



Introduction

Most of companies and organizations are now entirely dependent on their information systems. As a result, handling production, customer relations, R&D, accounting, invoicing and other strategic applications have become easier.

It is now essential to monitor your information system health in real time and to be able to anticipate breakdowns even before they occur, or in the worst case, to fix them as soon as possible.

Your infrastructure diagnosis during a dysfunction can very easily become a productivity issue, especially if there is no full picture of the established infrastructure.

On a place supplied with ACKSYS products, our WaveManager tool will allow you to have an overview of your entire ACKSYS equipment fleet.



What is WaveManager ?

WaveManager is a computer application that brings infrastructure and products management together on a common platform. The Network Administrator's work is completely simplified. WaveManager allows you to configure, monitor, troubleshoot and manage ACKSYS hardware network deployments locally or remotely. All these features are also available on WaveViewer, the additional mobile application.

Key Elements

MANAGEMENT

- Centralized administration of ACKSYS solutions via Ethernet, WiFi or cellular*
- Dynamic detection of ACKSYS products on the local network
- Remote access on product WEB interfaces possible
- Remote equipment configuration and management of configuration files
- Single or grouped configuration of IP, radio channel, SSID and security parameters
- Adding certificate for HTTPS access on product web interfaces possible
- Synchronously upgrade several products firmwares at once
- Product group and zone management
- User management
- Simplified remote deployment and configuration from any location

MONITORING

- Signal quality monitoring of each ACKSYS WiFi client :
 - Signal plotting and recording
 - Programmable alarms on exceeding RSSI thresholds (high/low)
 - Alert configuration on edited equipment possible
- Dynamic display of the products status and their information in real time :
 - Online (validated by the user)
 - Absent
 - New (not validated by the user)
 - In conflict
 - Edited configuration
- Geolocation of ACKSYS access points and routers according to a postal address or geographical coordinates (GNSS) defined for it.

SECURITY

- User management and passwords access
- Editing product web access by changing the HTTP TCP port possible
- HTTPS certificate management
- SNMP V3

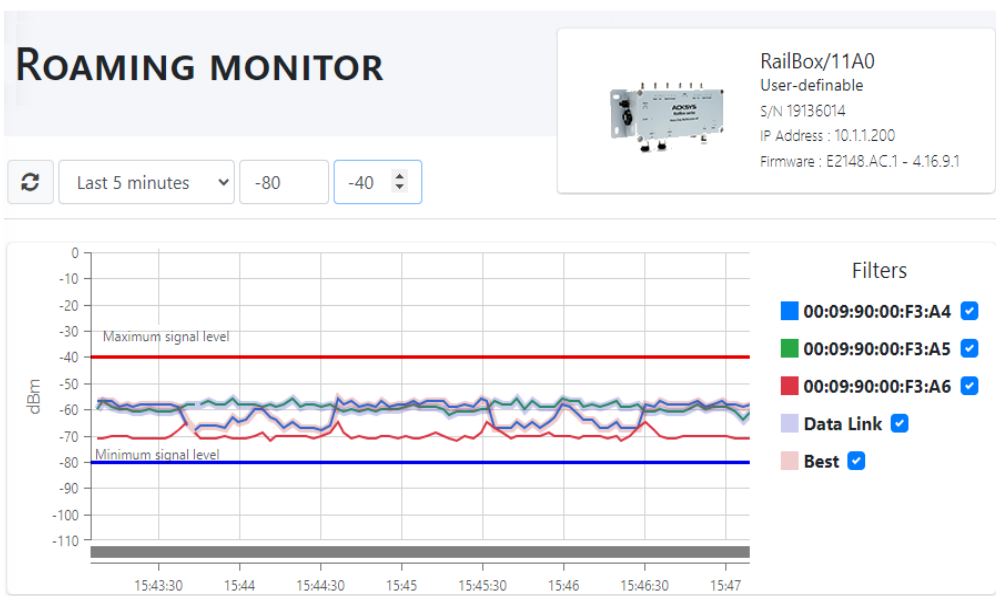
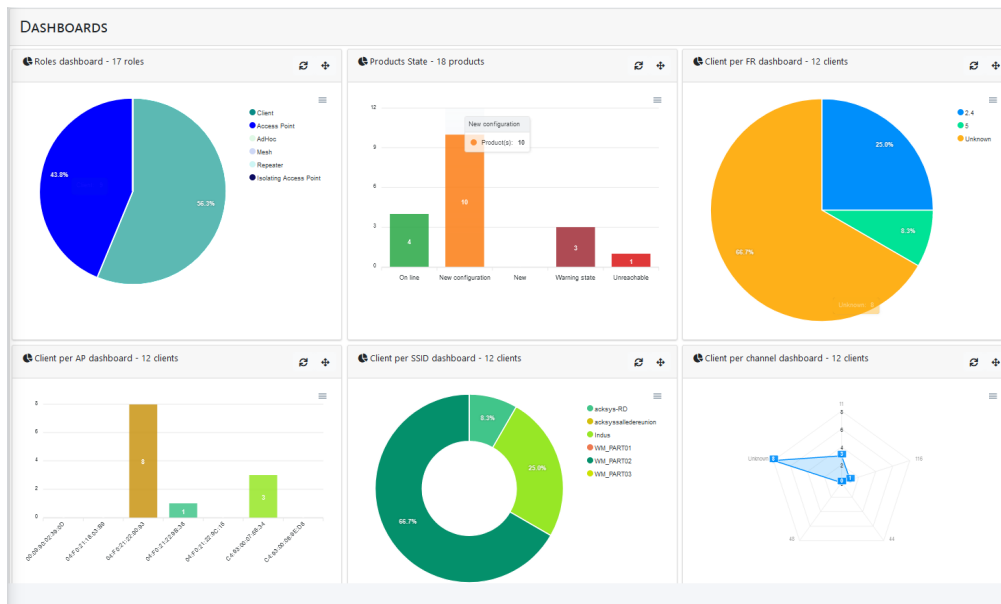
MAINTENANCE

- Supports diverse data collection methods: SNMP / PING
- LED Track to find a product installed by flashing its DIAG LED
- Export logs in various formats (Html, CSV, Xlsx, PDF) for detailed analysis.

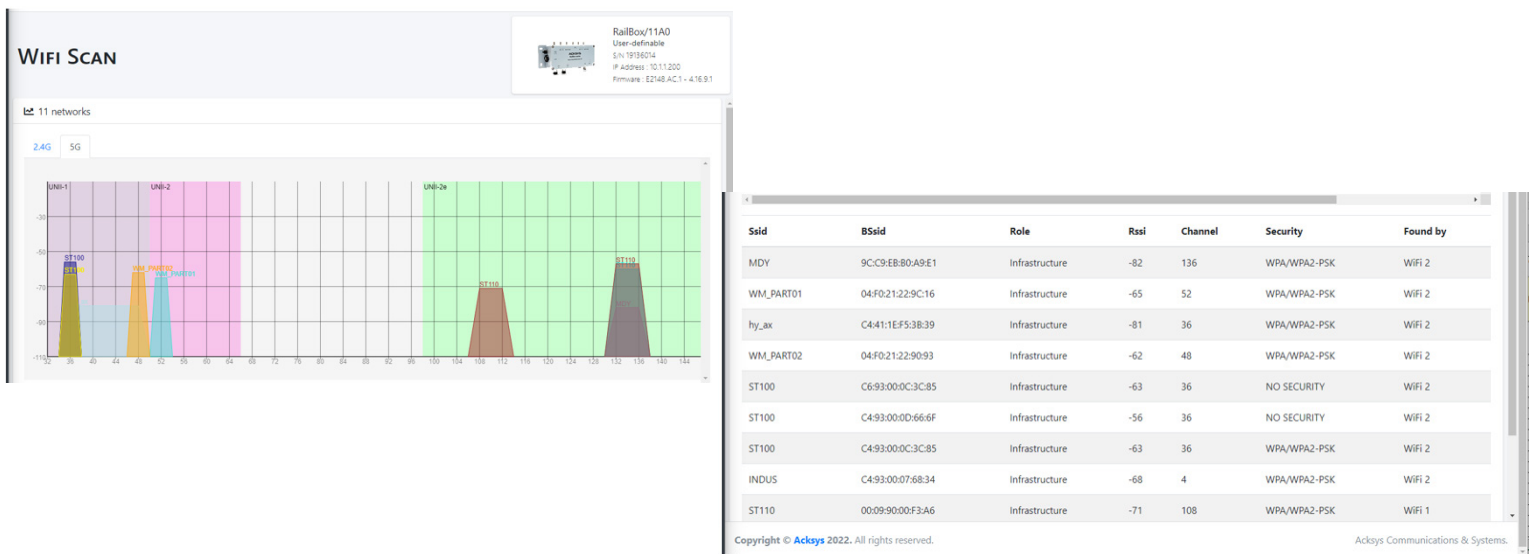
**Feature to come on the next version*

ACKSYS_WaveManager_US_Rev A2_22/05/23

Overview



Overview



ACKSYS COMMUNICATIONS & SYSTEMS

Products view

Dashboard

Configuration

Dist. discovery

New 0

On line 4

New config... 2

Warning 0

Model

50 per page

Group	Model	Serial	Product ID	Firmware	Version	IP Address
	RailBox/22AY	16206012	0000116EEA17	E2148.AC.1	4.16.8.1	192.168.38.48
	RailBox/22AY	16206015	0000116F797C	E2148.AC.1	4.18.0.1	192.168.38.84
	RailBox/22AY	16206017	0000116F7FD0	E2148.AC.1	4.18.0.1@RC8	192.168.38.84
	RailBox/22AY	16207016	0000116F8CE8	E2148.AC.1	4.16.0.1	192.168.38.84

DESCRIPTION

Discovery date 19/09/2022

Last connection 19/09/2022

IP Address 192.168.38.48

Mask 255.255.255.0

Gateway 192.168.38.1

Product ID 0000116EEA17

Firmware E2148.AC.1

Version 4.16.8.1

Latitude

WaveManager : Acksys Network Management System

New 0

On line 5

New configura... 0

Warning sta 0

Select All

Model

Group	Model	Serial	Product Id	Firmware	Version	IP Address	Roles
Passengers AP	AirLink	2010503e	00001C597E2B	E2148.AC.1	4.18.4.1	192.168.38.48	User-definable
Passengers AP	AirLink	2010504b	00001C59827F	E2148.AC.1	4.18.4.1	192.168.38.84	User-definable
Passengers AP	AirLink	20105043	00001C598573	E2148.AC.1	4.18.4.1	192.168.38.84	User-definable
Passengers AP	AirLink	2010504a	00001C59871B	E2148.AC.1	4.18.4.1	192.168.38.84	User-definable
Passengers AP	AirLink	20105041	00001C59AE70	E2148.AC.1	4.18.4.1	192.168.38.84	User-definable

All (23)

- Unassigned (13)
- TRACK SIDE (2)
 - Track Side Routers (2)
- ON BOARD (7)
 - CBB (2)
 - Passengers AP (5)
- DEPOT (1)
 - Depot AP (1)
- Manage Group/Zone

Technical characteristics overview

WaveManager

Server requirements	Intel Core i7 processor 8GB RAM, 256GB SSD 2 x Gigabit Ethernet ports
Operating System	<p>WINDOWS</p> <p>Windows 10 and higher (Windows 64 BITS for preference)</p> <p>Min 4 GB RAM</p> <p>More than 20 GB hard disk</p> <p>100 Mbps Ethernet Interface</p> <p>MS SQL Database (10GB for MS SQL)</p> <p>LINUX</p> <p>UBUNTU 20.04</p> <p>WaveManager .deb package</p> <p>More than 20 GB hard disk</p> <p>Min 4 GB RAM</p> <p>MS SQL (Not compliant MYSQL & PostgreSQL)</p> <p>Internet access to update some package from Ubuntu Depot</p>
Security & Management	SNMP v1, v2c, v3, UDAP
Database	Microsoft SQL Lite

All the brand names mentioned in this document are trademarks. ACKSYS is constantly looking at ways to improve its products. The current specifications may therefore be modified without notice and the characteristics set out herein should be construed as creating any contractual obligation. All the featured herein are designed and manufactured in Europe.

ACKSYS_WaveManager_US_Rev A2_22/05/23